

Three-terminal positive voltage regulator

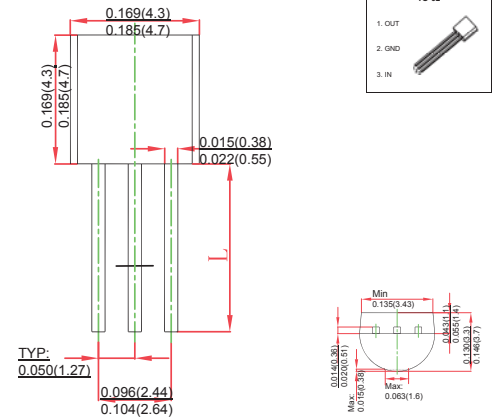
FEATURES

- Maximum output current IOM: 0.1A
- Output voltage VO: -9V
- Continuous total dissipation
 $P_D: 0.625\text{ W (} T_a = 25\text{ }^\circ\text{C)}$

MECHANICAL DATA

- Case: TO-92 Small Outline Plastic Package
- Polarity: Color band denotes cathode end
- Mounting Position: Any

TO-92



ABSOLUTE MAXIMUM RATINGS

(Operating temperature range applies unless otherwise specified)

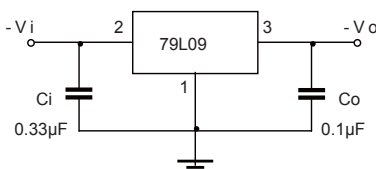
Parameter	Symbol	Value	Unit
Input Voltage	V_i	-30	V
Thermal Resistance from Junction to Ambient	$R_{\theta JA}$	200	$^\circ\text{C/W}$
Operating Junction Temperature Range	T_{OPR}	0~+150	$^\circ\text{C}$
Storage Temperature Range	T_{STG}	-65~+150	$^\circ\text{C}$

ELECTRICAL CHARACTERISTICS AT SPECIFIED VIRTUAL JUNCTION TEMPERATURE (VI=-16V, Io=40mA, Ci=0.33 μF , Co=0.1 μF , unless otherwise specified)

Parameter	Symbol	Test conditions	Min	Typ	Max	Unit	
Output Voltage	V_o	25 $^\circ\text{C}$	-8.64	-9.0	-9.36	V	
		0-125 $^\circ\text{C}$	-12V $\leq V_i \leq$ -24V, Io=1mA-40mA	-8.55	-9.0	-9.45	V
			Io=1mA-70mA	-8.55	-9.0	-9.45	V
Load Regulation	ΔV_o	Io=1mA-100mA, 25 $^\circ\text{C}$		19	90	mV	
		Io=1mA-40mA, 25 $^\circ\text{C}$		11	40	mV	
Line Regulation	ΔV_o	-12V $\leq V_i \leq$ -24V, 25 $^\circ\text{C}$		45	175	mV	
		-13V $\leq V_i \leq$ -24V, 25 $^\circ\text{C}$		40	125	mV	
Quiescent Current	Iq	25 $^\circ\text{C}$		4.1	6.0	mA	
Quiescent Current Change	ΔI_q	-13V $\leq V_i \leq$ -24V, 0-125 $^\circ\text{C}$			1.5	mA	
	ΔI_q	1mA $\leq V_i \leq$ 40mA, 0-125 $^\circ\text{C}$			0.1	mA	
Output Noise Voltage	V_N	10Hz $\leq f \leq$ 100KHz, 25 $^\circ\text{C}$		58		$\mu\text{V}/V_o$	
Ripple Rejection	RR	-15V $\leq V_i \leq$ -24V, f=120Hz, 0-125 $^\circ\text{C}$		45		dB	
Dropout Voltage	Vd	25 $^\circ\text{C}$		1.7		V	

* Pulse test.

TYPICAL APPLICATION

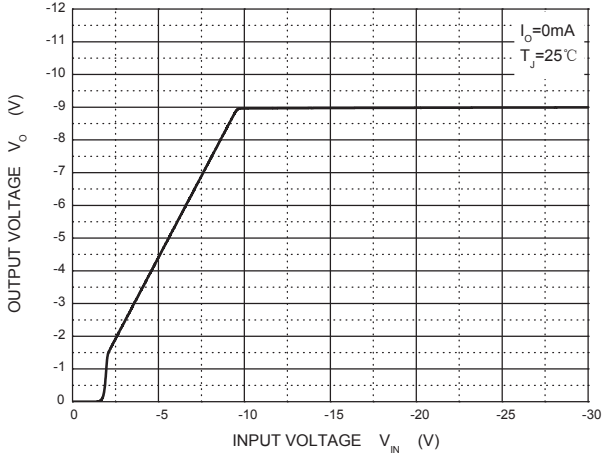


Note: Bypass capacitors are recommended for optimum stability and transient response and should be located as close as possible to the regulators

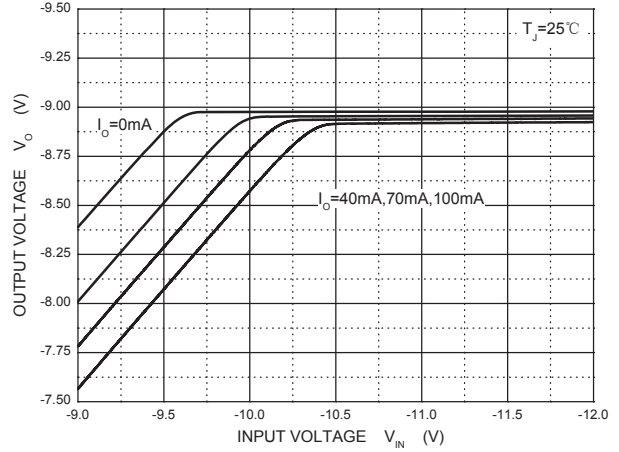
RATINGS AND CHARACTERISTIC CURVES

TYPICAL APPLICATION

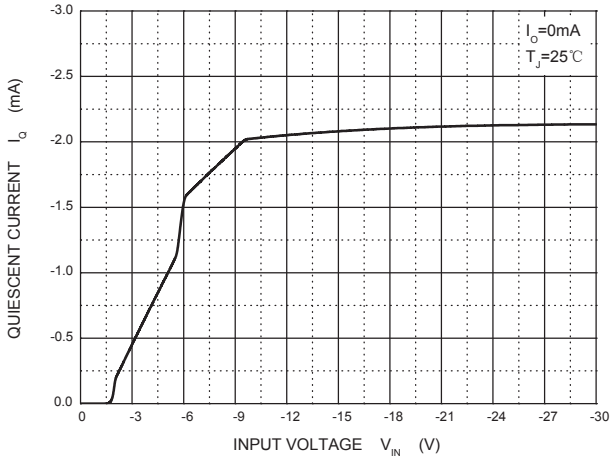
Output Characteristics



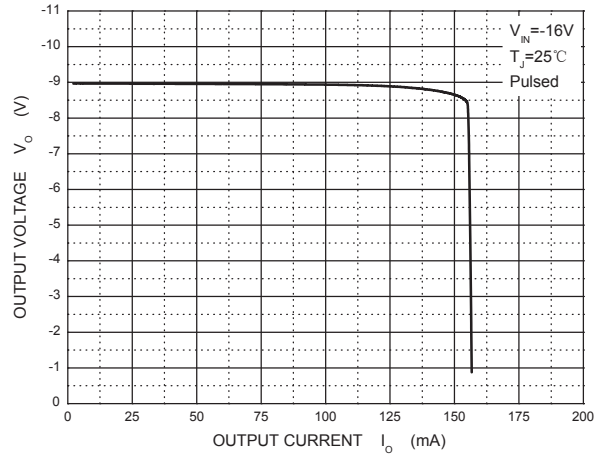
Dropout Characteristics



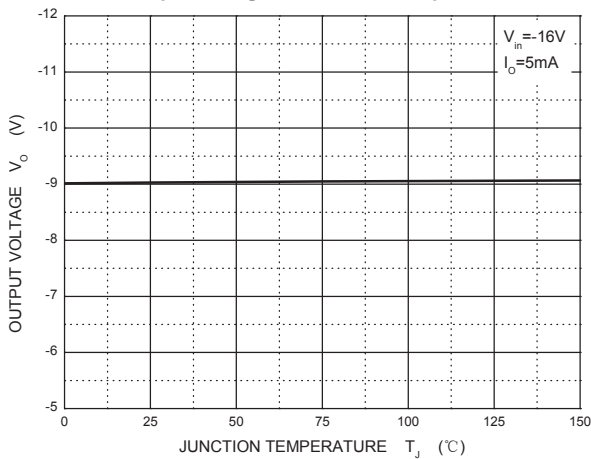
Quiescent Current vs Input Voltage



Current Cut-off Grid Voltage



Output Voltage vs Junction Temperature



Power Derating Curve

